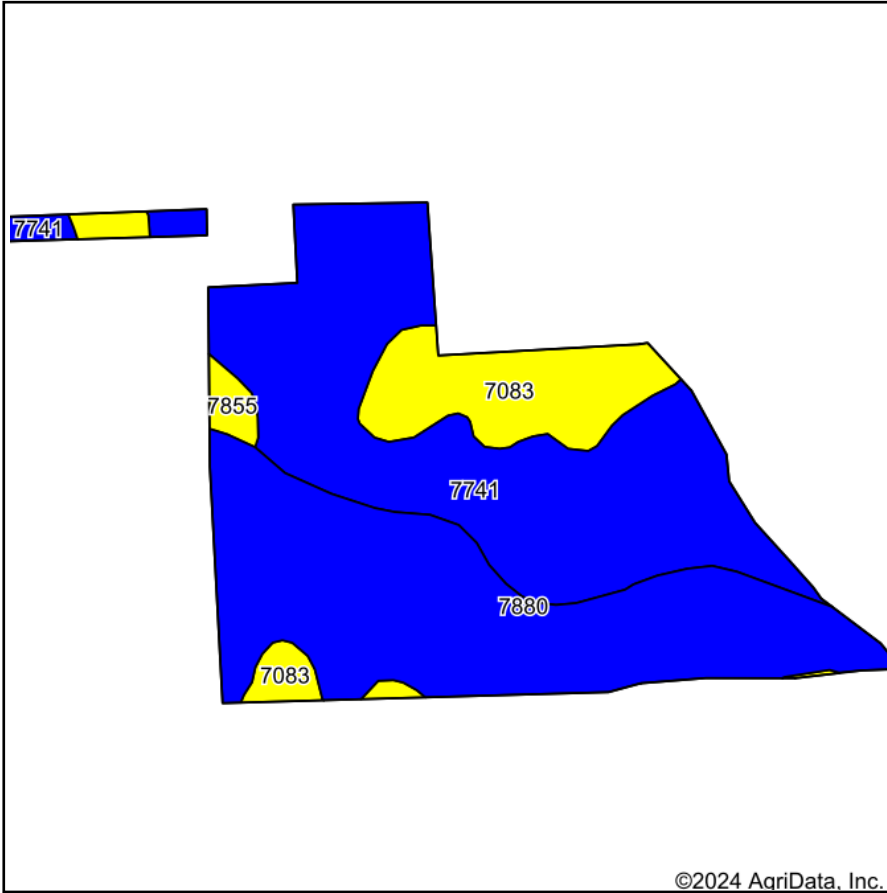
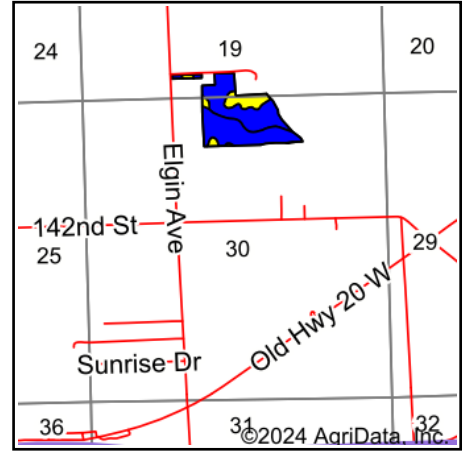


# Soils Map



©2024 AgriData, Inc.

Soils data provided by USDA and NRCS.



State: **Nebraska**  
 County: **Dakota**  
 Location: **19-29N-9E**  
 Township: **Covington**  
 Acres: **33.94**  
 Date: **7/19/2024**

**AgCentric**  
 Farm Agency, LLC  
 712-277-2741

Maps Provided By:



© AgriData, Inc. 2023

www.AgriDataInc.com



Area Symbol: NE043, Soil Area Version: 21

Code	Soil Description	Acres	Percent of field	Non-Irr Class Legend	Non-Irr Class *c	Irr Class *c	*n NCCPI Overall	*n NCCPI Corn	*n NCCPI Small Grains	*n NCCPI Soybeans
7741	Haynie silt loam, 0 to 2 percent slopes, occasionally flooded	14.98	44.1%		Ilw	Ilw	78	67	53	77
7880	Onawa silty clay, occasionally flooded	13.60	40.1%		Ilw	Ilw	56	46	37	56
7083	Sarpy loamy fine sand, occasionally flooded	4.61	13.6%		IVs	IIIs	25	19	21	25
7855	Sarpy silty clay, overwash, occasionally flooded	0.75	2.2%		IVs	IVs	36	35	36	34
<b>Weighted Average</b>					<b>2.32</b>	<b>2.18</b>	<b>*n 61.1</b>	<b>*n 51.4</b>	<b>*n 41.9</b>	<b>*n 60.6</b>

\*n: The aggregation method is "Weighted Average using all components"

\*c: Using Capabilities Class Dominant Condition Aggregation Method

Soils data provided by USDA and NRCS.